



ALUMINUM  
**PAN RACKS** **NSF**  
**All Welded Curved Top**



Front Load



Side Load

Item #:	_____	Qty #:	_____
Model #:	_____		
Project #:	_____		

**FEATURES:**

Curved top design.  
 Heavy duty welded construction with 6 cross supports.  
 1" x 1 1/2" ribbed angles.  
 Front load pan rack holds 18" x 26" pans or 18" x 13" pans. Side load pan rack holds 18" x 26" pans.  
 Heavy duty 5" stem bolted swivel casters.  
 500 lb. capacity.

**CONSTRUCTION:**

Fully welded 1" square tubing ladder assembly.  
 Angles are 1" x 1 1/2" x 20" on front load pan rack and 1" x 1 1/2" x 17 3/4" on side load pan rack.

**MATERIAL:**

6063-T52 extruded aluminum angles, upright tubing, and support pieces.

Model #	Description	Pan Capacity	Shelf Spacing (A)	Overall Size L x W x H	Approx. Weight
PR10-3W	Front Load	10 Full Size or 20 Half Size	3"	20 1/4" x 26" x 38 1/2"	25 lbs.
PR10-6W	Front Load	10 Full Size or 20 Half Size	6"	20 1/4" x 26" x 69 1/4"	27 lbs.
PR12-5W	Front Load	12 Full Size or 24 Half Size	5"	20 1/4" x 26" x 69 1/4"	28 lbs.
PR15-4W	Front Load	15 Full Size or 30 Half Size	4"	20 1/4" x 26" x 69 1/4"	31 lbs.
PR18-3W	Front Load	18 Full Size or 36 Half Size	3"	20 1/4" x 26" x 63 1/4"	34 lbs.
PR20-3W	Front Load	20 Full Size or 40 Half Size	3"	20 1/4" x 26" x 69 1/4"	35 lbs.
PR30-2W	Front Load	30 Full Size or 60 Half Size	2"	20 1/4" x 26" x 69 1/4"	43 lbs.
PR10-6WS	Side Load	10 Full Size	6"	28 1/4" x 18" x 69 1/4"	26 lbs.
PR12-5WS	Side Load	12 Full Size	5"	28 1/4" x 18" x 69 1/4"	27 lbs.
PR15-4WS	Side Load	15 Full Size	4"	28 1/4" x 18" x 69 1/4"	30 lbs.
PR18-3WS	Side Load	18 Full Size	3"	28 1/4" x 18" x 63 1/4"	27 lbs.
PR20-3WS	Side Load	20 Full Size	3"	28 1/4" x 18" x 69 1/4"	34 lbs.



**Customer Service Available To Assist You 1-800-645-3166 8:30 am - 7:00 pm E.S.T.**

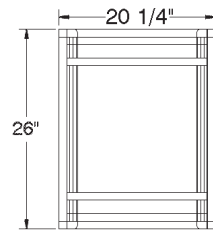
For Orders & Customer Service:  
 Email: customer@advancetabco.com or Fax: 631-242-6900

For Smart Fabrication™ Quotes:  
 Email: smartfab@advancetabco.com or Fax: 631-586-2933

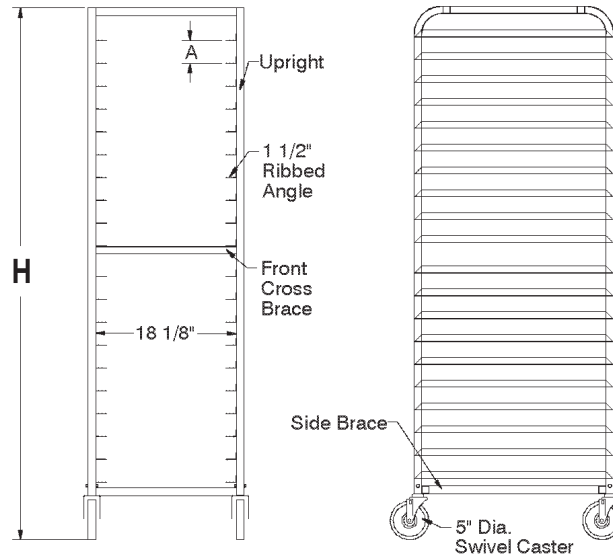
# DIMENSIONS and SPECIFICATIONS

TOL ± .500"

ALL DIMENSIONS ARE TYPICAL



Front Load



Side Load

