



701 S Ridge Avenue, Troy, OH 45374
1-888-4HOBART • www.hobartcorp.com

WRAPPING SYSTEM ACCESSORIES



HAND-WRAP STATIONS

MODELS

- ☐ W32-6 Wrap Station
- ☐ W32C-5 Wrap Station

STANDARD FEATURES (both models)

- Easy to load film
- Low-temperature film cut-off system
- Stainless steel element
- 3-roll film capacity – 8" to 18" wide; Top roll limited to 14" wide
- Fingertip film selection
- Maximum roll outside diameter 9½"
- 3" ID core plugs standard
- Rugged aluminum and stainless steel construction
- Adjustable height from 37" to 39½"
- Operates in all ambient temperatures

W32 STANDARD FEATURES

- Furnished with all Hobart Semi-Automatic CLA Systems unless specified otherwise
- Compact 12½" deep x 25" wide design

W32C STANDARD FEATURES

- Built-in hotplate
- Deep 26" x 22½" wide frame provides stability for freestanding use

W32 OPTIONS AT EXTRA COST

- 55A-SHELF – Platter Shelf

W32C OPTIONS AT EXTRA COST

- 69A-SHELF – Platter Shelf

SPECIFICATIONS

CONSTRUCTION: Rugged aluminum frame and roll core plugs with stainless steel wrapping surface and roll shafts plated steel.

DIMENSIONS: **W32** – 12½" deep x 25" wide;
W32C – 26" deep x 22½" wide.

OPTIONAL PLATTERS: **55A** – stainless steel platter shelf w/aluminum mounting brackets. 22" L x 14" W. 10 lbs. shipping weight. **69A** – stainless steel platter shelf w/aluminum mounting brackets. 14½" x 24½". 10 lbs. shipping weight.

HOTPLATE ON W32C: 8" x 15" teflon coated

FILM HOLDERS: Three roll film selector. 9.5" capacity diameter x 18" maximum length (lower two rolls), 14" maximum length upper roll.

ELECTRICAL: **W32** – 100-120/60/1, input 1 amp;
W32C – 100-120/60/1, input 11.3 amps, including hot plate and film cutting rod.

SHIPPING WEIGHTS: **W32** – 50 lbs.; **W32C** – 60 lbs.;
55A – 10 lbs.; **69A** – 5 lbs.



W32-6 Wrap Station



W32C-5 Wrap Station with two
optional 69A Platter Shelves

WRAPPING SYSTEM ACCESSORIES

HOBART

701 S Ridge Avenue, Troy, OH 45374
1-888-4HOBART • www.hobartcorp.com

POWERED SEALER BELT

MODEL

- ☐ SP-5

STANDARD FEATURES

- 12" wide sealer belt
- Flexible working height 35½" to 38"
- Belt speed 330" per minute

ACCESSORIES

- ☐ Requires 51A sealer legs or 52A sealer support, or both depending on system ordered

SPECIFICATIONS

CONSTRUCTION: Heavy duty stainless steel frame. Durable sealer belt.

DIMENSIONS (including legs): 36"H x 42"L x 16¾"W x 3½"D (9"D at motor location).

ELECTRICAL: 208-240/60/1, 3 wire, 15 amps. Thermostatic heat control. Motor, subfractional H.P.

SHIPPING WEIGHT: **SP-5** - 75 lbs.; **51A** - 10 lbs.; **52A** - 8 lbs.



ROLLER/DISCHARGE TABLE

MODELS

- ☐ HRT2-1 – 36"L work area, 24"L adjustable conveyor, 34"H
- ☐ HRT4-2 – 36"L work area, 12"L adjustable conveyor, 28"H
- ☐ HRT5-3 – 36"L work area, 48"L adjustable conveyor, 28"H
- ☐ HRT6-2 – 48"L work area, 48"L adjustable conveyor, 28"H

STANDARD FEATURES

- Work areas are 36" to 48" long
- Available with single or double tiered label dispenser

ACCESSORIES

- ☐ HRT-LD136 – Single label dispenser (36"W table)
- ☐ HRT-LD236 – Double tier label dispenser (36"W table)
- ☐ HRT-LD248 – Double tier label dispenser (48"W table)
- ☐ HRT-LABKIT – 49 additional round disks

SPECIFICATIONS

CONSTRUCTION: Heavy duty stainless steel.

DIMENSIONS: 36" to 48" long, 28" to 34" high. Adjustable conveyor 12" to 24" long.

SHIPPING WEIGHTS: **HRT2-1** – 183 lbs.; **HRT4-2** – 161 lbs.; **HRT5-3** – 209 lbs.; **HRT6-2** – 227 lbs.; **HRT-LD136** – 23 lbs.; **HRT-LD236** – 24 lbs.; **HRT-LD248** – 43 lbs.; **HRT-LABKIT** – 2 lbs.





701 S Ridge Avenue, Troy, OH 45374
1-888-4HOBART • www.hobartcorp.com

WRAPPING SYSTEM ACCESSORIES

ROTARY BIN

MODELS

- ☐ RBG
- ☐ RBG-C

SPECIFICATIONS

CONSTRUCTION: Aluminum tub and stainless steel frame, hard rubber casters on RBG-C.

DIMENSIONS: Adjustable height from 28⁷/₈" to 37¹/₂".

SHIPPING WEIGHT: 65 lbs.

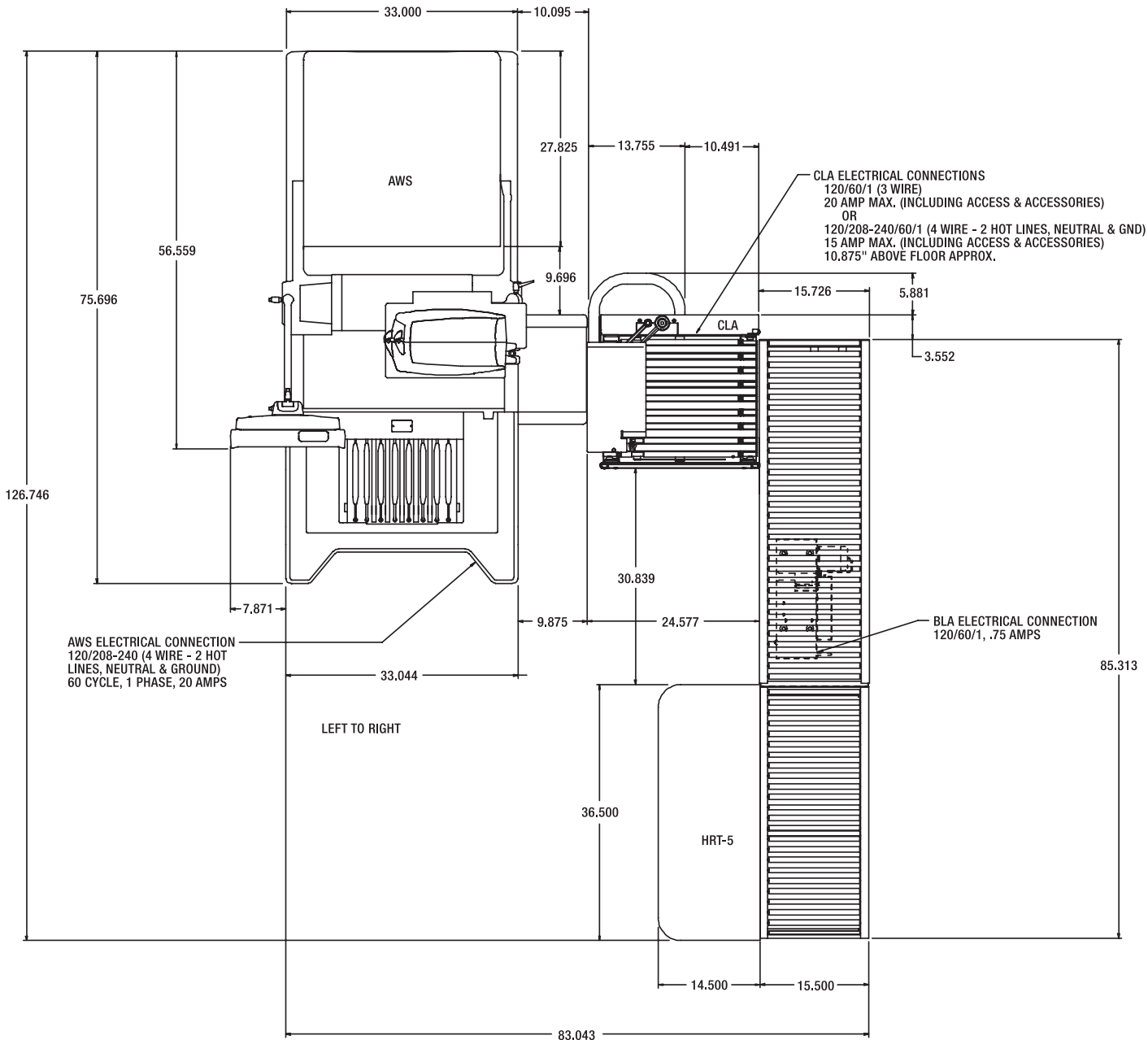


WRAPPING SYSTEM ACCESSORIES



701 S Ridge Avenue, Troy, OH 45374
1-888-4HOBART • www.hobartcorp.com

DETAILS AND DIMENSIONS



AWS/Access CLA System with Roller Conveyor and HRT

As continued product improvement is a policy of Hobart, specifications are subject to change without notice.