



# SMALL CAPACITY DISPOSERS

## COMMERCIAL DISPOSERS FOR HEAVY DUTY FOODSERVICE USE

### PRODUCT FEATURES & SPECIFICATIONS

#### IDEAL FOR HEAVY DUTY APPLICATIONS

- Restaurants
- Healthcare & hospitals
- Schools & universities
- Travel & leisure

#### PRODUCT OVERVIEW

- Corrosion resistant stainless steel grind chamber
- 3/4" (19.1 mm) rubber mounting above grinding chamber, enclosed in chrome plated covers for sanitation and appearance
- 1 H.P. induction motor with built-in thermal overload protection, 1725 RPM, totally enclosed to provide protection against outside moisture with controlled power air flow to cool motor—provides better efficiency, longer life
- Cast nickel chrome alloy stationary and rotating shredding elements for long life and corrosion resistance, designed for reverse action grinding
- Double-tapered Timken roller bearings provide a shock absorbing cushion
- Triple lip seal protects motor from water damage and secondary spring-loaded oil seal provides double protection against water and loss of grease
- Stainless steel and chrome plated finish—paint-free for lasting sanitation

#### WHAT'S INCLUDED

- Base disposer: 1 mounting gasket
- Disposer packages: 1 mounting/bowl assembly, 1 electrical control, 1 syphon breaker, 1 solenoid valve, and 1 flow control valve (the standard flow control valve will be sent with the unit unless the optional valve is specified)



**1**  
YEAR  
ON-SITE  
PARTS & LABOR  
WARRANTY

### MODEL & HORSEPOWER/ELECTRICAL REQUIREMENTS

- |  |   |
|--|---|
| <input type="checkbox"/> <b>SS-100</b> | <input type="checkbox"/> 115/208-230V, 60 Hz, 1 Ph, 11.6/5.1/5.7 amps, <b>CUL</b> |
| 1 H.P.                                 | <input type="checkbox"/> 208-230/460V, 60 Hz, 3 Ph, 2.2/3.0/1.5 amps, <b>CUL</b>  |
|  | <input type="checkbox"/> 120/208-240V, 60 Hz, 1 Ph, 11.6/5.1/5.7 amps, <b>NOM</b> |
|  | <input type="checkbox"/> 100/200-230V, 50/60 Hz, 1 Ph, 10.4/5.2/5.4 amps          |

### ELECTRICAL CONTROLS

- ☐ **AS-101 Control Center**  
AquaSaver®  
(Auto-Reversing)



**Industry Exclusive!**  
Automatically regulates  
water flow to grind load

- ☐ **CC-101 Control Center**  
(Auto-Reversing)



- ☐ **CC-202 Control Center**  
(Auto-Reversing)



- ☐ **Manual Reverse Switch**  
(Dual Direction)



- ☐ **Manual Switch**  
(Single Direction)



A complete collection of our product drawings is available for download at the **InSinkErator Revit/CAD Library**, which can be found at [www.insinkerator.com/foodservice](http://www.insinkerator.com/foodservice). Product information is also accessible on **The KCL CADalog**. More information is available from KCL at [www.kclcad.com](http://www.kclcad.com).



4700 21st STREET  
RACINE, WI 53406  
TEL: 800-845-8345  
FAX: 262 554-3620

[www.insinkerator.com/foodservice](http://www.insinkerator.com/foodservice)






The Emerson logo is a  
trademark and a service mark  
of Emerson Electric Co.



DISPOSER MOUNTING ASSEMBLIES (choose one)




Bowl Mounts

- ☐ Type A Sink Bowl Assembly: Includes bowl, water nozzle(s), bowl cover, splash baffle
- ☐ Type B Sink Bowl Assembly: Includes bowl, water nozzle(s), silver guard, splash baffle
- ☐ Type C Sink Bowl Assembly: Includes bowl, water nozzle(s), splash baffle

Sink Bowl Assembly Size

- ☐ 12" (304.8 mm) with one adjustable water nozzle
- ☐ 15" (381.0 mm) with one adjustable water nozzle
- ☐ 18" (457.2 mm) with two adjustable water nozzles

Collar Mounts

- ☐ #5 Sink Flange Mounting Assemblies for 3-1/2" – 4" (88.9 mm – 101.6 mm) sink opening (support legs are recommended)
- ☐ #6 Collar Adaptor for welding into trough, provides 6-5/8" (168.3 mm) opening, includes splash baffle
- ☐ #7 Collar Adaptor for welding into sink, provides 6-5/8" (168.3 mm) opening, includes splash baffle and stopper

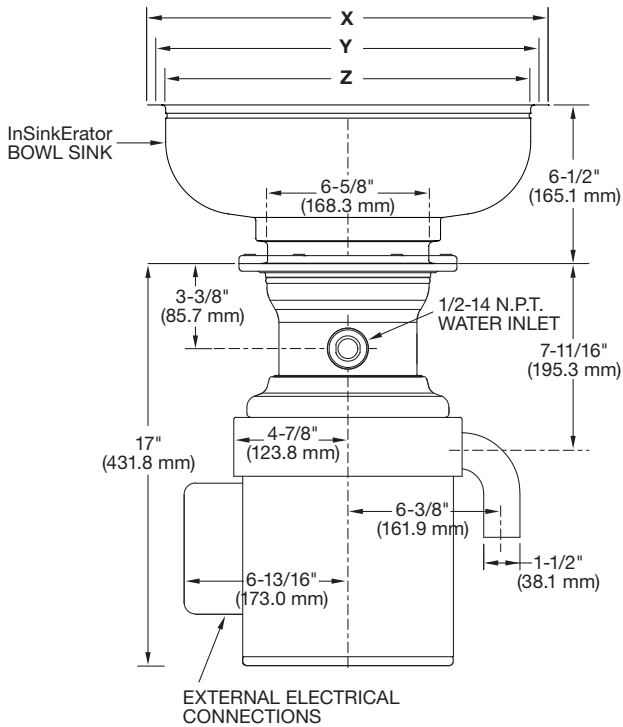
DIMENSIONS

**IMPORTANT:** Use dimension chart below for adaptor height in place of InSinkErator bowl sink height when mounting directly to a sink.

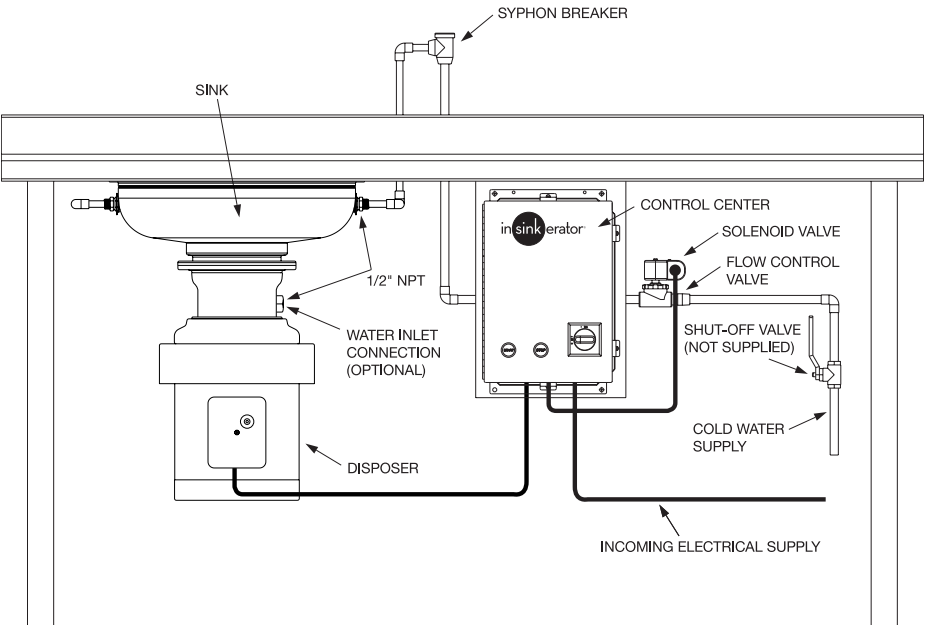
Bowl Sinks	Flange O.D. X	Work Table Hole Y	Flange I.D. Z	Height
12" (304.8 mm)	13-1/2" (342.9 mm)	12-1/4" (311.2 mm)	12" (304.8 mm)	6-1/2" (165.1 mm)
15" (381 mm)	16-1/2" (419.1 mm)	15-1/4" (387.4 mm)	15" (381.0 mm)	6-1/2" (165.1 mm)
18" (457.2 mm)	19-1/2" (495.3 mm)	18-1/4" (463.6 mm)	18" (457.2 mm)	6-1/2" (165.1 mm)
Adaptors	X	Y	Z	Height
No. 5	Fits Standard Sink Opening: 3-1/2" – 4" (88.9 mm – 101.6 mm)			2-3/4" (69.9 mm)
No. 6	7-13/16" (198.4 mm)	6-7/8" (174.6 mm)	6-5/8" (168.3 mm)	1-3/16" (30.2 mm)
No. 7	9-1/8" (231.8 mm)	7-7/8" (200.0 mm)	7-5/8" (193.7 mm)	2-1/16" (52.4 mm)

NOTE:

- Adaptors are available upon request for all competitor sink bowls or cones.
- Please have sink bowl/cone type with the necessary dimensions when ordering adaptors.



RECOMMENDED INSTALLATION



RECOMMENDED WATER USAGE

	Standard	Optional
SS-100	5 GPM (18.9 LPM)	3 GPM (11.4 LPM)

For additional information, see Foodservice Product Information Binder.