

**CLBM-49F**  
**Reach-In Freezer**  
**Self-Contained Solid Doors**



This unit is listed to the applicable UL, CSA and NSF Standards by an approved NRTL. Consult the factory or unit's data plate for approval information.

**STANDARD PRODUCT FEATURES**

- Stainless Steel Door(s) & Louver
- Anodized Aluminum Sides & Interior
- Positive Seal Self-Closing Door with Stay Open Feature at 110°
- LED Display Control for Accuracy and Easy Monitoring
- Thermal Expansion Valve (TXV) Metering Device
- Three (3) Adjustable, Heavy Duty Epoxy Coated Shelves Per Section
- Set of Four (4) 4" High Casters with Locks Standard on Front Casters
- Gasket-Protecting Retainer
- Bottom-Mounted Refrigeration System
- High-Density, Non-CFC Foamed in Place Polyurethane Insulation
- Easily Accessible Condenser Coil for Cleaning
- Ergonomically Friendly Lower Shelf
- Storage on Top of Cabinet
- 3 Year Parts & Labor Warranty, Additional 2 Years on Compressor Parts

**ACCESSORIES & OPTIONS (Available at Extra Cost)**

- + Additional Epoxy Coated Shelves on Pilasters
- + Additional Epoxy Coated Shelves on Pins
- + Set of Four (4) 6" High Legs
- + Set of Four (4) 6" High Casters
- + #1 or Universal Type Trayslides

**AVAILABLE CONFIGURATIONS**

| MODELS         | HINGING                       |
|----------------|-------------------------------|
| CLBM-49F-FS-LR | Full Solid Doors, Left/Right  |
| CLBM-49F-FS-LL | Full Solid Doors, Left/Left   |
| CLBM-49F-FS-RR | Full Solid Doors, Right/Right |
| CLBM-49F-HS-LR | Half Solid Doors, Left/Right  |
| CLBM-49F-HS-LL | Half Solid Doors, Left/Left   |
| CLBM-49F-HS-RR | Half Solid Doors, Right/Right |

| Model    | Doors | Shelves | Dimensions<br>L x D x H (in.) | Voltage  | Amps | NEMA    | Ship Wt.<br>(lbs.) | Cu. Ft. |
|----------|-------|---------|-------------------------------|----------|------|---------|--------------------|---------|
| CLBM-49F | 2     | 6       | 53.75 x 33.5 x 78*            | 115/60/1 | 11.1 | 5 - 15P | 790                | 43.88   |

\*Note: 78 in. height without casters

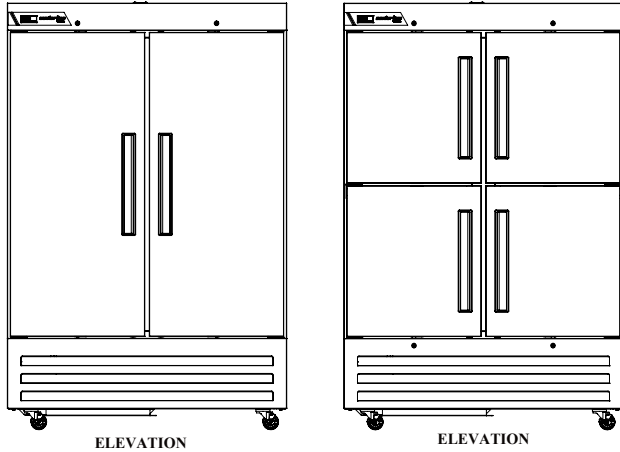
As continued product improvement is a policy of Traulsen, specifications are subject to change without notice.

**Bottom Mounted Reach-In Freezer**

Approved by \_\_\_\_\_ Date \_\_\_\_\_ Approved by \_\_\_\_\_ Date \_\_\_\_\_

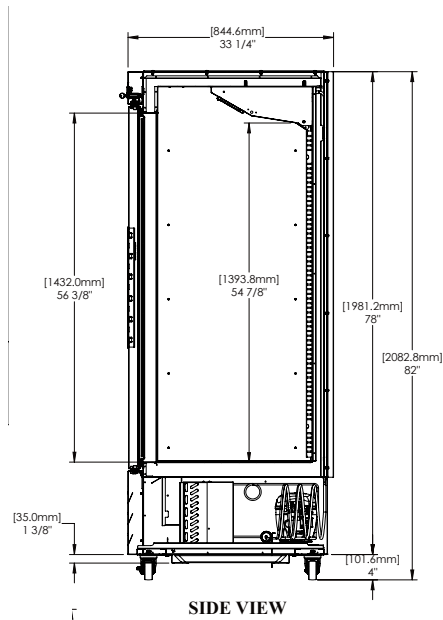
**MODEL - CLBM-49F**

Full Height & Half Height Solid Door Models

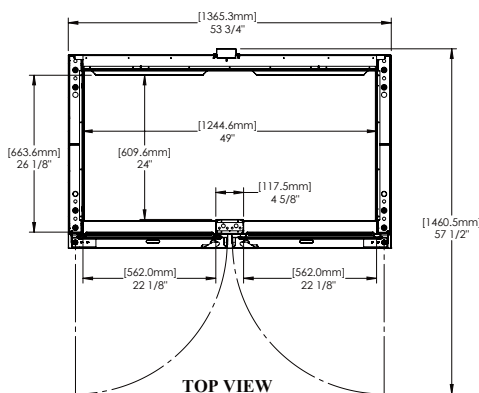


ELEVATION

ELEVATION



SIDE VIEW



TOP VIEW

**SPECIFICATIONS**

**CONSTRUCTION, HARDWARE, INSULATION**

Cabinet louver assembly and door(s) are constructed of stainless steel. Cabinet sides (including returns), front, interior and door liners are constructed of anodized aluminum. The exterior cabinet top, back and bottom are constructed of galvanized steel. A set of four (4) 4" high casters are included. Doors are equipped with a gasket protecting retainer and removable plug cylinder locks. Both the cabinet and door(s) are insulated with an average of 2-3/8" thick high density, non-CFC, foamed in place polyurethane insulation.

**REFRIGERATION SYSTEM**

A bottom mounted, self-contained, balanced refrigeration system using environmentally friendly, non-flammable R-448A refrigerant is conveniently located behind the one piece louver assembly. It features an easy to clean front facing condenser, thermal expansion valve (TXV) metering device and air-cooled hermetic compressor. A 9' cord and plug is provided. Standard operating temperature is -1°F to 2°F.

**CONTROLLER**

The easy to use electronic digital control is supplied standard. It includes a 3-Digit LED display, and a Fahrenheit or Celsius temperature scale display capability.

**INTERIOR**

Standard interior arrangements include three (3) epoxy coated wire shelves per section, mounted on pins. Recommended load limit per shelf should not exceed 150 lbs.

**WARRANTY**

Both a 3 Year Parts & Labor Warranty and additional 2 Years on Compressor Parts Warranty are supplied standard.

| MODELS                     | CLBM-49F       |
|----------------------------|----------------|
| <b>ELECTRICAL DATA</b>     |                |
| Voltage                    | 115/60/1       |
| Full Load Amperes          | 11.1           |
| <b>REFRIGERATION DATA</b>  |                |
| Refrigerant                | R-448A         |
| Refrigerant Charge oz.     | 26 (737 gr)    |
| BTU/HR <sup>1</sup>   H.P. | 1964   1/4     |
| <b>SHIPPING DATA</b>       |                |
| Depth Crated in.           | 40 (101.6 cm)  |
| Height Crated in.          | 85 (215.9 cm)  |
| Length Crated in.          | 62 (157.5 cm)  |
| Volume Crated cu. ft.      | 122 (3454.7 l) |
| Net Weight lbs.            | 525 (238.1 kg) |
| Gross Weight lbs.          | 575 (260.8 kg) |

**NOTES:**

1. BTU/HR based on a 90°F ambient and -20°F evaporator

Equipped with one NEMA 5-15P Plug



**CAD and/or Revit Files Available**