

PATTERNED
PANTS**CHEF PANTS - WOVEN CHALKSTRIPE**

- ◆ Relaxed, universal fit; elastic drawstring waist
- ◆ Two side-seam pockets
- ◆ 65/35 poly-cotton blend
- ◆ Color display box only available with full case (FC) qty

Refer to sizing guide following chef hats

Individually packaged in printed poly-bag



Color box with full case purchase

S M L XL 2X

ITEM	COLOR	SIZE	UOM	CASE
UNF-3CS	Chalkstripe	S	Each	12/24
UNF-3CM	Chalkstripe	M	Each	12/24
UNF-3CL	Chalkstripe	L	Each	12/24
UNF-3CXL	Chalkstripe	XL	Each	12/24
UNF-3CXXL	Chalkstripe	2X	Each	12/24



UNF-3CM



Woven pattern



Elastic drawstring waist

**CHEF PANTS - HOUNDSTOOTH**

- ◆ Relaxed, universal fit; elastic waistband with inner drawstring
- ◆ Two side-seam pockets
- ◆ 65/35 poly-cotton blend
- ◆ Color display box only available with full case (FC) qty

Refer to sizing guide following chef hats

Individually packaged in printed poly-bag



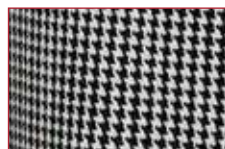
Color box with full case purchase

S M L XL 2X

ITEM	COLOR	SIZE	UOM	CASE
UNF-4KS	Houndstooth	S	Each	12/24
UNF-4KM	Houndstooth	M	Each	12/24
UNF-4KL	Houndstooth	L	Each	12/24
UNF-4KXL	Houndstooth	XL	Each	12/24
UNF-4KXXL	Houndstooth	2X	Each	12/24



UNF-4KM



Pattern



Elastic waistband, inner drawstring

